

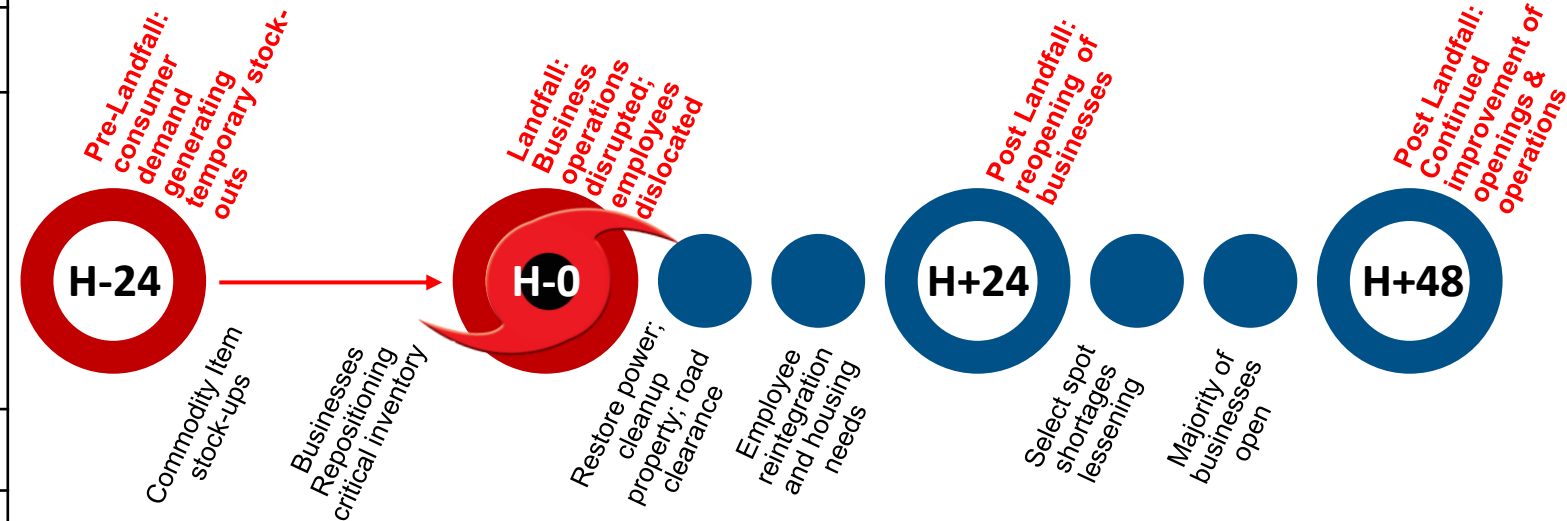
- There does not appear to be any long-term systemic disruptions to food, water, or fuel supply chains. Restoration of power, post hurricane clean-up, route clearance and facilitating the return and housing of evacuated employees and staff remain the biggest challenges to re-opening business.
- The slow-moving nature of the storm will subject areas to prolonged rain and may cause record breaking flooding. Public and private sector damage assessments in the impacted area will likely be impeded by weather conditions over the next 12 hours.
- Fire growth continues across Oregon, California, and Colorado. No major impacts have been observed on business or industry operations; likely due to the isolated locations in which the fires are located.

OUTLOOK/TRENDS

- Road damage will cause delays to response, commodity deliveries and re-entry of evacuees, 1st responders, and repair crews.
- Large retail and food sector partners do not expect any supply chain issues. Pre-staged resources are flowing to support reopening of stores.
- Non-congregate sheltering continues to be the preferred option due to the pandemic which will reduce options for sheltering. Hotel availability for employees dislocated by a disaster remains a concern for private sector.

| Lifeline | Status |
|---|--|
| Communications US | <ul style="list-style-type: none"> • Telecommunications have reported limited disruption; however no long-term outages are expected. |
| Food, Water, Shelter US | <ul style="list-style-type: none"> • Private sector has pre-positioned trucking to flow into affected areas to restock/replace goods. There may be spot delays due to road conditions, however no significant disruptions are expected at present. • The need for sheltering is expected to rise as evacuations are lifted and survivors return to flood damaged uninhabitable homes. • Industry is observing substantial utilization of non-congregate sheltering due to the pandemic and current disasters. |
| Health and Medical US | <ul style="list-style-type: none"> • Medical facilities in the affected area will likely be evacuated or operating on generator power. |
| Transportation Ports and Interstates | <ul style="list-style-type: none"> • Select areas of I-10, I-110, and I-65 in the affected area have been impacted but largely remain passable. Surface street and county road travel are likely facing obstruction and flooding. Movement of inland cargo will likely be delayed due to road damage. • Ports located in the storm track and parts of the Mississippi River are closed to inbound and outbound traffic. |
| Energy Electricity | <ul style="list-style-type: none"> • There does not appear to be systemic issues with consumer fuel availability. There may be time-to-service issues due to demand, but overall supply remains stable. • AL reports 280K outages and FL 230K outages. |

Projected Business Stabilization Timeline for Hurricane Sally



NBEOC Current Actions & SITREP

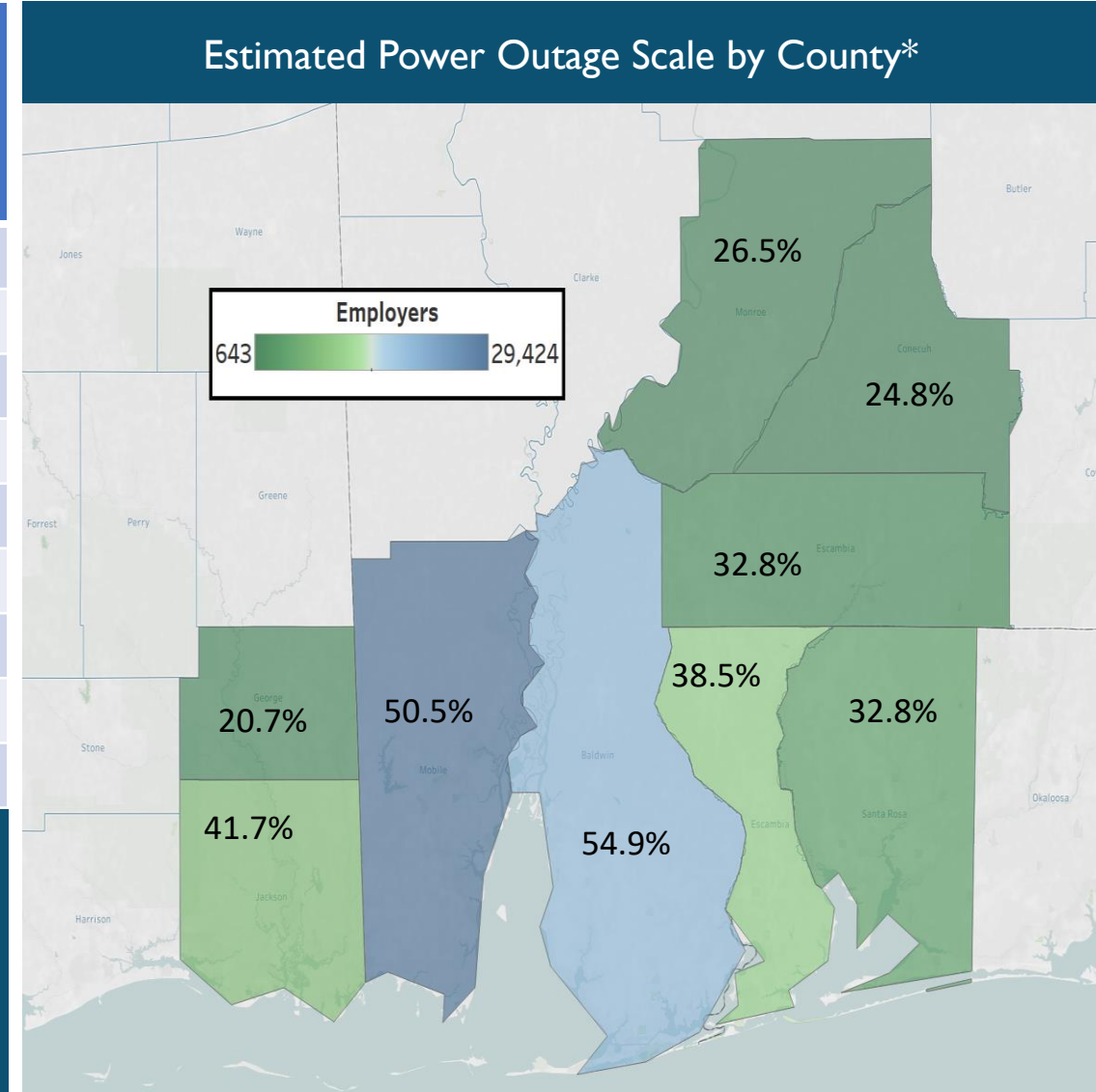
- ESF-14 Cross Sector Business & Infrastructure call engaged 350 stakeholders covering Hurricane Sally and the wildfires.
- Generating power outage and risk analyses for affected hurricane areas.
- Continue engaging FEMA Regions 4 and 6 regarding Sally and Regions 9 and 10 on the wildfires.
- Coordinating with private sector fuel, food, and water suppliers of demand to determine gaps and top issues.

NBEOC Outreach Today

- Target
- CVS Health
- Wal-Mart
- Amtrak
- Food Marketing Institute
- American Hotel and Lodging Association
- Chevron Phillips Chemical
- Lockheed Martin
- Publix

Power Outage Impact Analysis: Mississippi, Alabama & Florida

| State | County | Employers | Employees | Daily Wages | Small Business % |
|-------------|------------|-----------|-----------|--------------|------------------|
| Alabama | Mobile | 29,424 | 176,029 | \$17,486,442 | 58.1% |
| | Baldwin | 19,621 | 78,781 | \$6,466,832 | 64.9% |
| | Escambia | 2,070 | 13,480 | \$1,318,966 | 57.9% |
| | Monroe | 1,122 | 7,010 | \$729,010 | 54.1% |
| | Conecuh | 643 | 3,463 | \$335,779 | 55.2% |
| Florida | Escambia | 11,171 | 120,704 | \$14,360,229 | 60.6% |
| | Santa Rosa | 4,706 | 30,703 | \$3,428,900 | 65.4% |
| Mississippi | Jackson | 8,763 | 42,153 | \$3,730,435 | 56.7% |
| | George | 1,374 | 4,703 | \$350,501 | 54.9% |

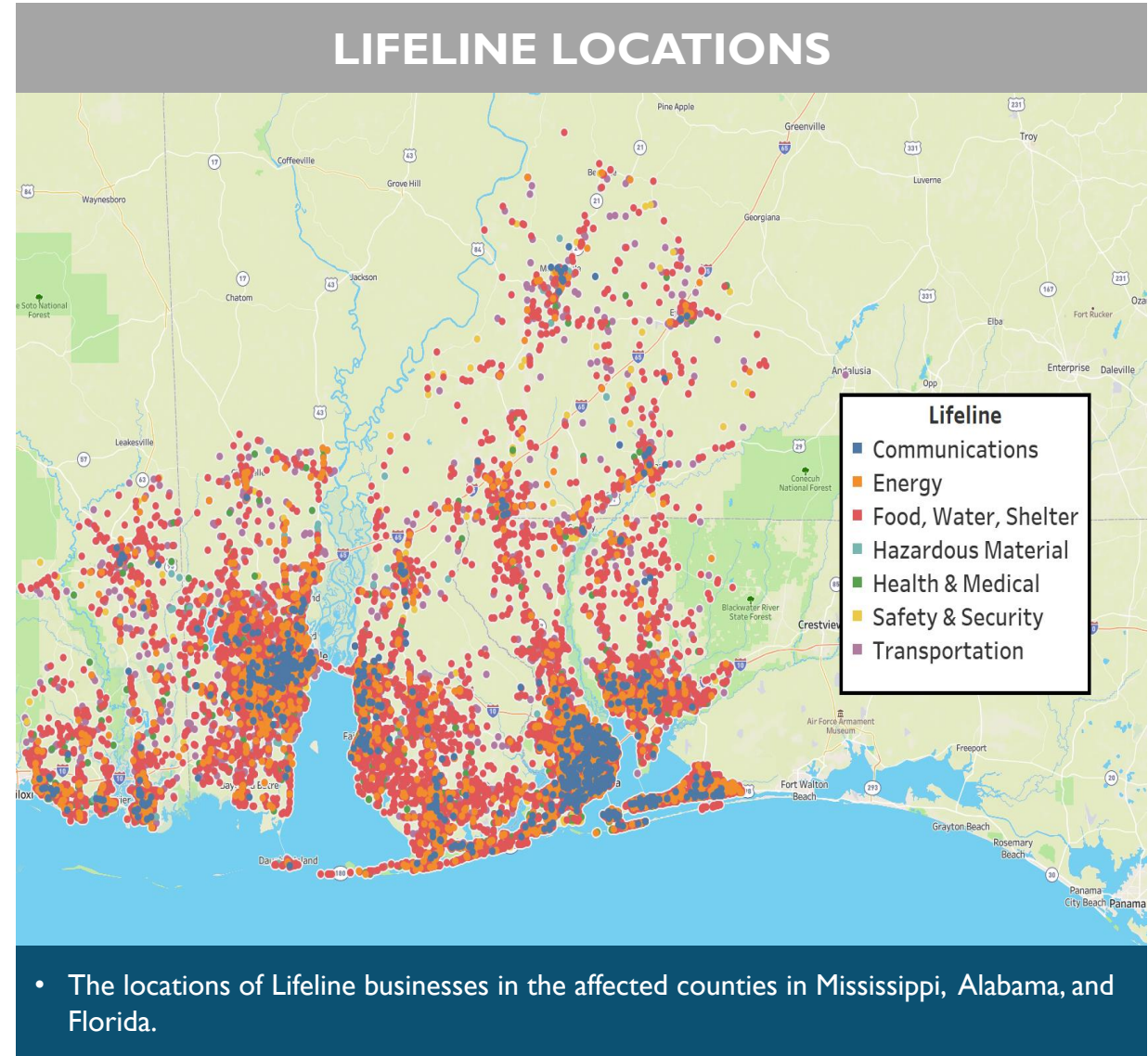


- These slides and maps describe the largest grocery, store gasoline station, and water suppliers in the counties in Mississippi, Alabama, and Florida, in which more than 20% of customers are expected to lose power by the Department of Energy.

Lifelines in the Affected Region

| Lifeline | Employers | Employees | Daily Wages | Probability of Inactivity (HVI)* | Small Business |
|----------------------|-----------|-----------|-------------|----------------------------------|----------------|
| Food, Water, Shelter | 6,837 | 101,289 | \$8,186,589 | 4.1% | 62.7% |
| Health & Medical | 2,975 | 56,650 | \$6,952,549 | 4.0% | 73.7% |
| Transportation | 2,788 | 32,901 | \$3,449,423 | 3.7% | 72.6% |
| Safety & Security | 547 | 21,839 | \$2,728,380 | 0.0% | 0.0% |
| Energy | 1,100 | 12,937 | \$1,534,723 | 5.0% | 65.3% |
| Communications | 316 | 3,866 | \$590,385 | 3.5% | 46.8% |
| Hazardous Material | 238 | 3,063 | \$321,425 | 2.3% | 42.9% |

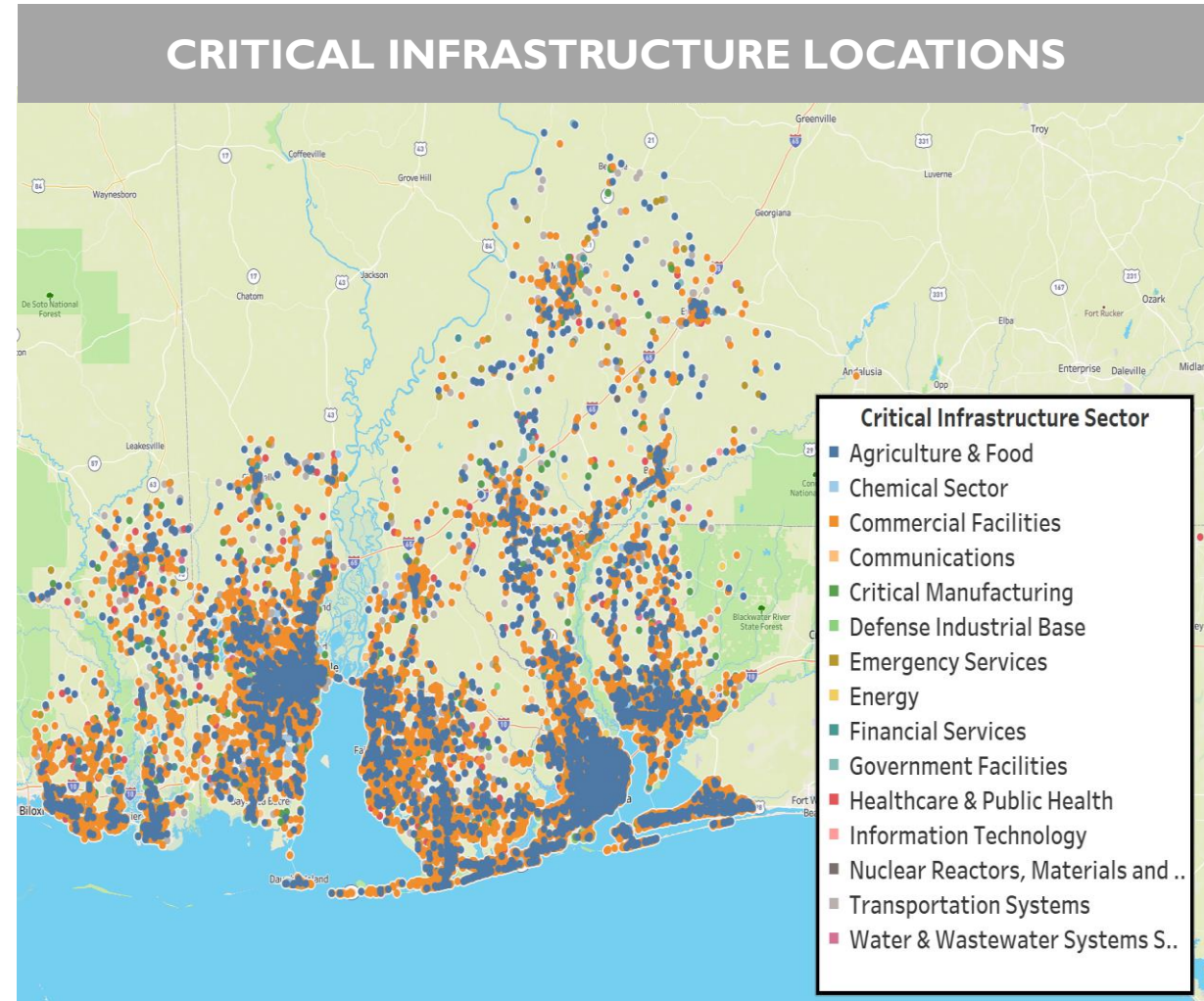
- **Energy (5.0%)** Lifeline businesses have the greatest probability of closing within a year of Hurricane Sally.
- Business landscape of Lifeline businesses in the affected counties in Mississippi, Alabama, and Florida.



Critical Infrastructure in the Affected Region

| CIKR | Employers | Employees | Daily Wages | Probability of Inactivity (HVI)* | Small Business |
|-----------------------------------|-----------|-----------|-------------|----------------------------------|----------------|
| Commercial Facilities | 9,347 | 93,739 | \$8,130,538 | 4.5% | 74.8% |
| Healthcare & Public Health | 2,962 | 55,067 | \$6,900,243 | 3.8% | 66.9% |
| Agriculture & Food | 2,400 | 48,474 | \$3,922,654 | 4.7% | 73.1% |
| Financial Services | 1,843 | 18,261 | \$3,188,666 | 4.0% | 42.3% |
| Government Facilities | 830 | 17,085 | \$2,134,248 | 0.0% | 0.1% |
| Defense Industrial Base | 259 | 14,037 | \$1,764,164 | 0.6% | 20.5% |
| Transportation Systems | 861 | 11,365 | \$1,315,216 | 4.1% | 73.9% |
| Emergency Services | 556 | 10,238 | \$1,270,695 | 2.8% | 34.2% |
| Critical Manufacturing | 1,004 | 9,923 | \$1,335,561 | 2.3% | 65.9% |
| Communications | 193 | 3,197 | \$502,520 | 3.3% | 52.8% |
| Energy | 131 | 2,178 | \$376,038 | 3.1% | 36.6% |
| Water & Wastewater Systems Sector | 134 | 1,822 | \$287,819 | 2.0% | 57.5% |
| Information Technology | 70 | 731 | \$101,827 | 3.8% | 1.4% |
| Chemical Sector | 52 | 522 | \$65,387 | 2.1% | 26.9% |
| Nuclear Reactors and Waste Sector | 14 | 130 | \$11,455 | 1.8% | 42.9% |

- The **Agriculture and Food (4.7%)** sector is expected to see the most impact from Hurricane Sally.
- The business landscape of Critical Infrastructure Segments in the affected counties in Mississippi, Alabama, and Florida.



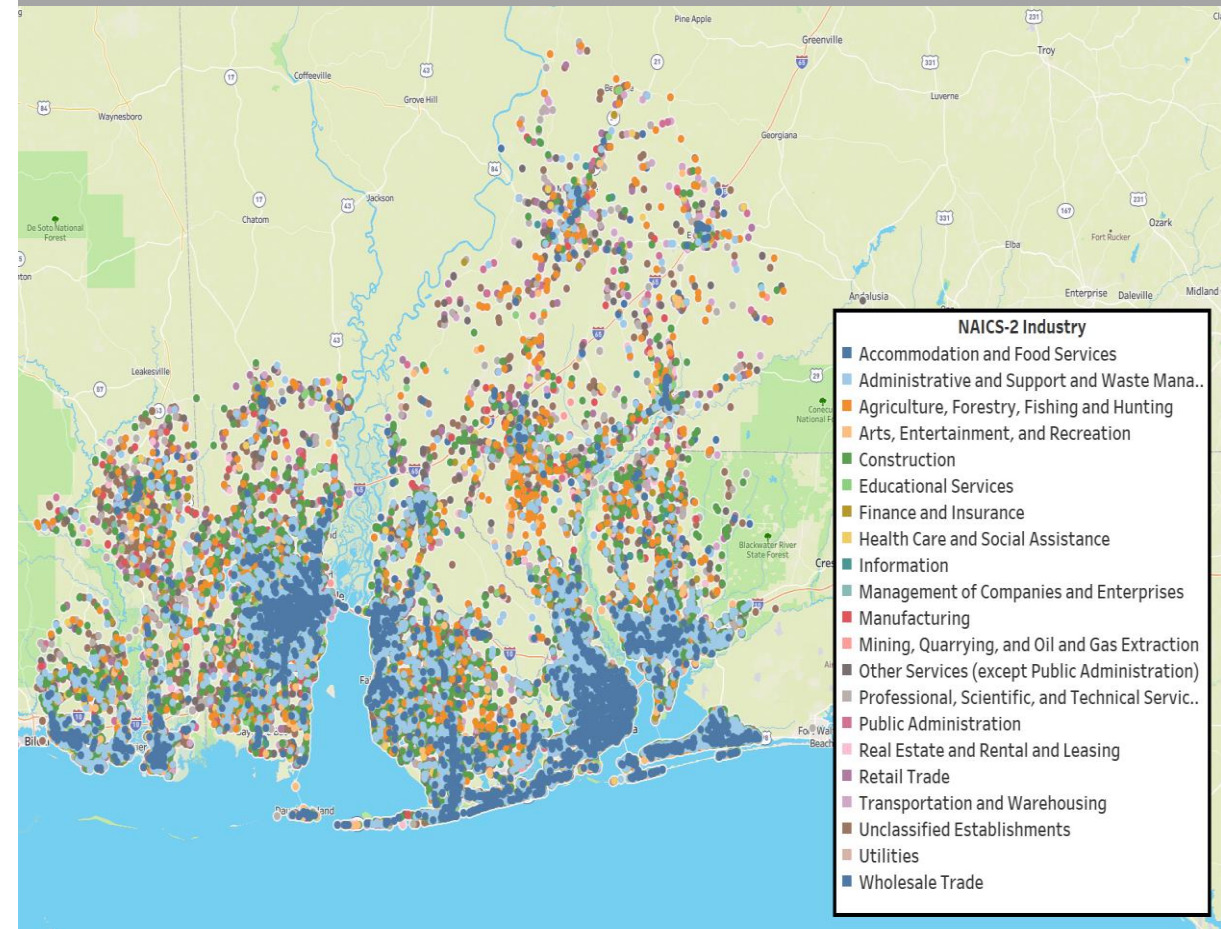
- The locations of Critical Infrastructure Segments in the affected counties in Mississippi, Alabama, and Florida.

NAICS-2 Industry Segments in the Affected Area

| NAICS-2 Industry | Employers | Employees | Daily Wages | Probability of Inactivity (HVI) | Small Business |
|--|-----------|-----------|-------------|---------------------------------|----------------|
| Retail Trade | 5,084 | 65,109 | \$5,574,562 | 4.5% | 58.6% |
| Health Care and Social Assistance | 3,282 | 58,674 | \$7,364,226 | 3.9% | 67.9% |
| Accommodation and Food Services | 2,705 | 47,510 | \$2,106,098 | 4.6% | 73.8% |
| Public Administration | 1,339 | 37,094 | \$4,634,104 | 0.0% | 0.1% |
| Construction | 3,093 | 28,852 | \$3,772,762 | 3.5% | 91.1% |
| Manufacturing | 1,284 | 28,346 | \$3,904,358 | 2.4% | 66.0% |
| Administrative and Support and Waste Management and Remediation Services | 1,844 | 26,485 | \$2,357,642 | 4.1% | 81.2% |
| Professional, Scientific, and Technical Services | 3,310 | 21,706 | \$3,854,221 | 3.9% | 84.8% |
| Other Services (except Public Administration) | 4,323 | 20,299 | \$1,426,387 | 4.6% | 39.3% |
| Finance and Insurance | 1,843 | 18,261 | \$3,188,666 | 4.0% | 42.3% |
| Transportation and Warehousing | 1,064 | 15,212 | \$1,778,406 | 3.9% | 66.1% |
| Wholesale Trade | 1,631 | 14,155 | \$2,085,486 | 2.7% | 56.1% |
| Educational Services | 1,010 | 12,624 | \$1,044,685 | 3.8% | 22.0% |
| Real Estate and Rental and Leasing | 1,707 | 7,645 | \$884,026 | 5.4% | 77.7% |
| Information | 518 | 6,242 | \$975,748 | 4.0% | 49.6% |
| Arts, Entertainment, and Recreation | 564 | 4,445 | \$297,575 | 4.0% | 73.8% |
| Utilities | 150 | 2,519 | \$478,144 | 1.9% | 23.3% |
| Agriculture, Forestry, Fishing and Hunting | 286 | 1,969 | \$205,406 | 3.9% | 81.1% |
| Management of Companies and Enterprises | 31 | 1,594 | \$391,264 | 3.0% | 51.6% |
| Mining, Quarrying, and Oil and Gas Extraction | 58 | 499 | \$88,192 | 4.1% | 50.0% |

- Firms in the **Real Estate and Rental Leasing (5.4%)** are the most likely to go out of business within one year of being struck by Hurricane Sally
- The business landscape of firms by NAICS-2 industry code in the affected counties in Mississippi, Alabama, and Florida.

NAICS-2 INDUSTRY LOCATIONS



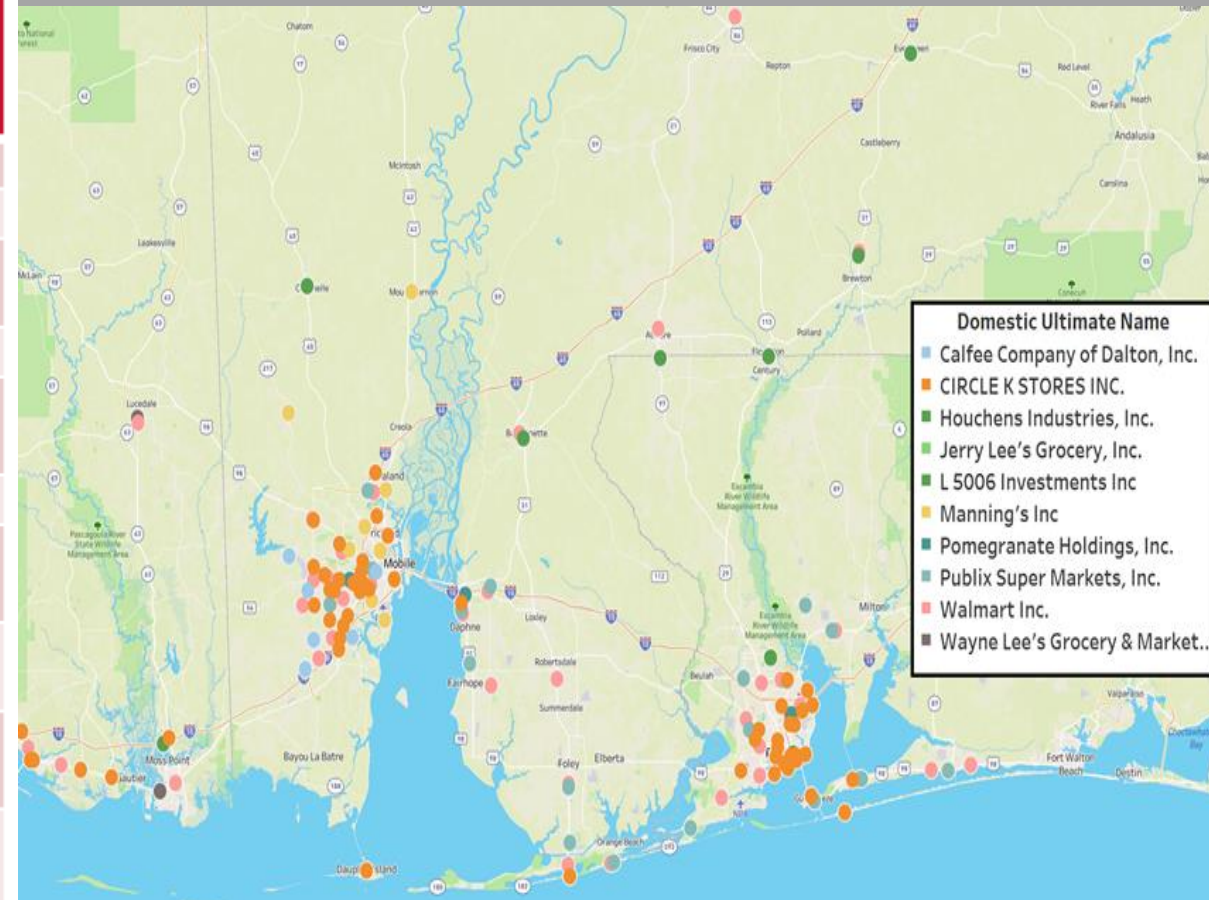
- The locations of firms by NAICS-2 industry code in the affected counties in Mississippi, Alabama, and Florida.

Grocery Stores: At-Risk Region

| Domestic Ultimate Business Name | Domestic Ultimate Trade Style | Locations in the Region | Employees in the Region |
|------------------------------------|-------------------------------|-------------------------|-------------------------|
| Walmart Inc. | Walmart | 39 | 3,133 |
| Publix Super Markets, Inc. | PUBLIX | 21 | 3,119 |
| Houchens Industries, Inc. | | 8 | 446 |
| Jerry Lee's Grocery, Inc. | | 4 | 395 |
| Manning's Inc | Manning's Marketplace | 11 | 336 |
| Pomegranate Holdings, Inc. | | 3 | 303 |
| Wayne Lee's Grocery & Market, Inc. | | 2 | 270 |
| CIRCLE K STORES INC. | Circle K | 56 | 260 |
| Calfee Company of Dalton, Inc. | Favorite Markets | 6 | 179 |
| L 5006 Investments Inc | Barnes Supermarket | 3 | 100 |

- Summary of the top grocery store (NAICS 445) employers in the impacted areas of Mississippi, Alabama, and Florida; they are aggregated at the Domestic Ultimate DUNS level, the highest business entity in the corporate family tree.

Regional Site Locations

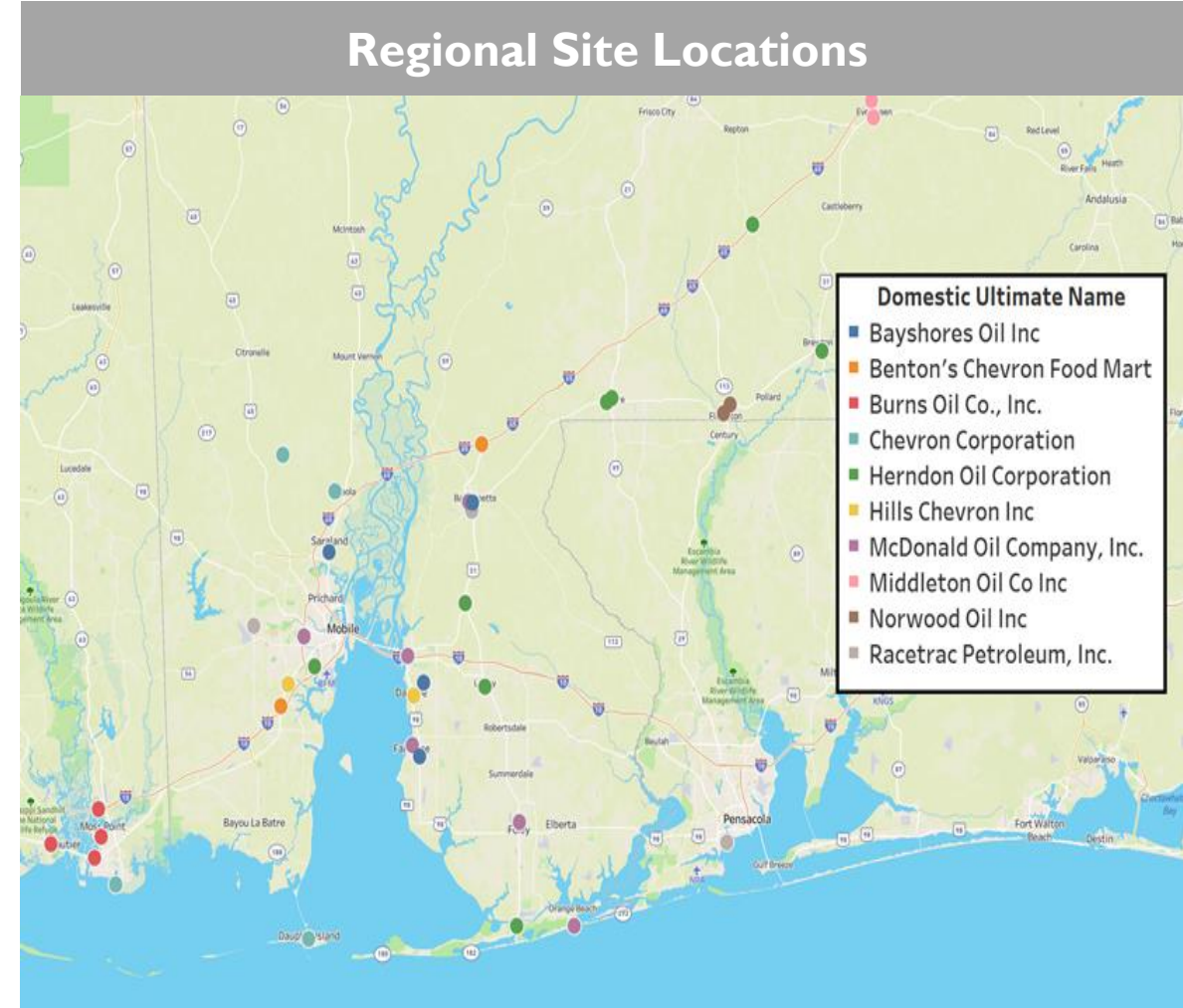


- The site locations of each grocery store within the corporate family tree of businesses listed in the table to the left.

Gas Stations: At-Risk Region

| Domestic Ultimate Business Name | Domestic Ultimate Trade Style | Locations in the Region | Employees in the Region |
|---------------------------------|-------------------------------|-------------------------|-------------------------|
| Herndon Oil Corporation | | 10 | 96 |
| Bayshores Oil Inc | Deli Depot | 4 | 40 |
| McDonald Oil Company, Inc. | Money Back | 6 | 27 |
| Middleton Oil Co Inc | | 3 | 25 |
| Racetrac Petroleum, Inc. | Racetrac | 3 | 23 |
| Burns Oil Co., Inc. | Chevron | 4 | 22 |
| Hills Chevron Inc | | 2 | 17 |
| Norwood Oil Inc | BP | 2 | 16 |
| Chevron Corporation | Chevron | 6 | 12 |
| Benton's Chevron Food Mart | | 2 | 10 |

- Summary of the top gas station (NAICS 447) employers in the impacted areas of Mississippi, Alabama, and Florida.; they are aggregated at the Domestic Ultimate DUNS level, the highest business entity in the corporate family tree.

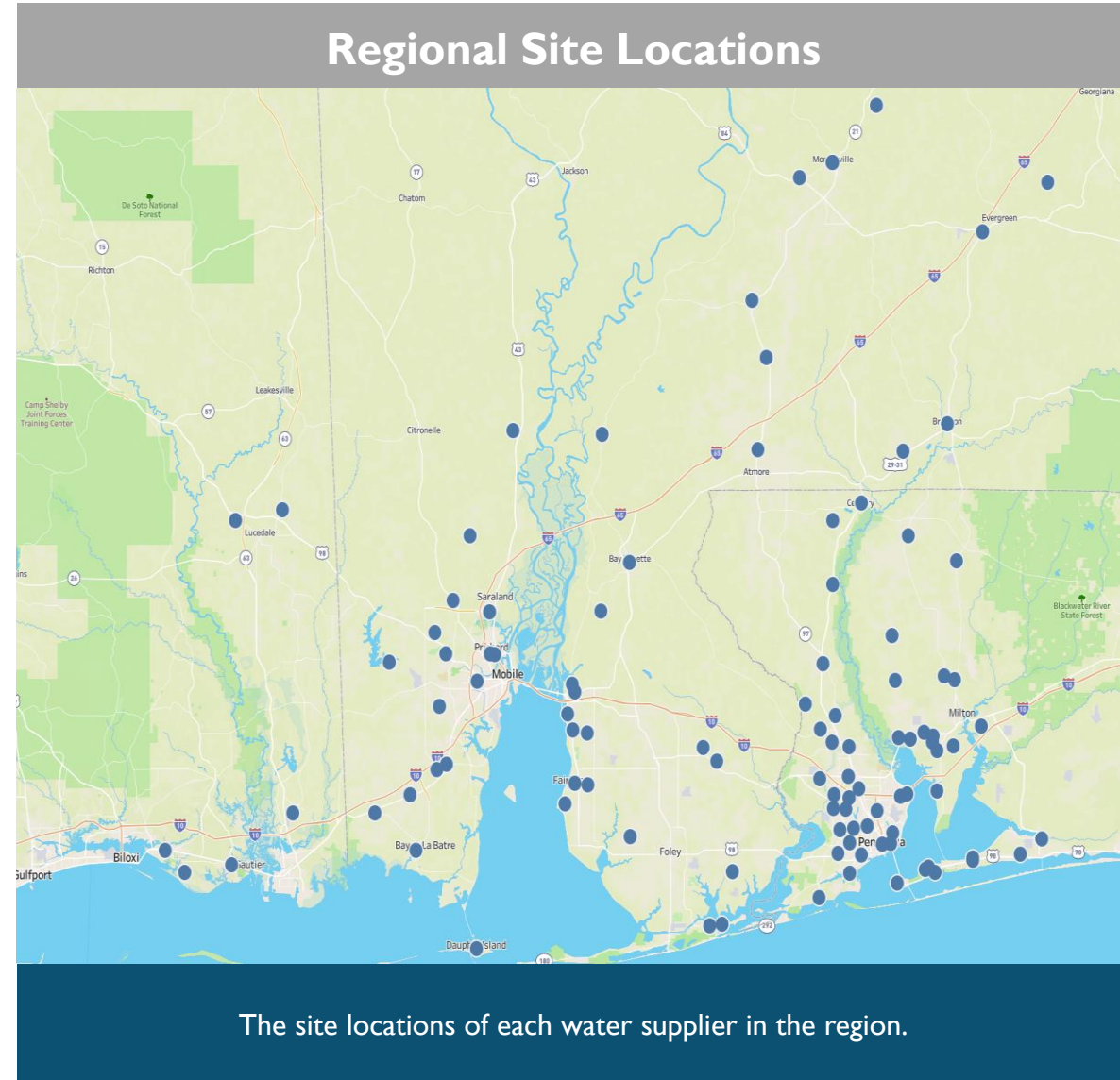


- The site locations of each gas station within the corporate family tree of businesses listed in the table above.

Water Suppliers: At-Risk Region

| Business Name | Address | City | County |
|--|---------------------------|---------------|------------|
| Board of Water and Sewer Commissioners of The City of Mobile | 4725 Moffett Rd Ste H | Mobile | Mobile |
| Holley-Navarre Water Systems Inc | 8574 Turkey Bluff Rd | Navarre | Santa Rosa |
| American Water Enterprises, LLC | 7303 Plantation Rd | Pensacola | Escambia |
| Elizabethtown Water Company Inc | 7303 Plantation Rd | Pensacola | Escambia |
| Pace Water System, Inc | 4401 Woodbine Rd | Milton | Santa Rosa |
| Jackson County Utility Authority | 10801 Seaman Rd | Ocean Springs | Jackson |
| Gautier Utility District | 3305 Gautier Vancleave Rd | Gautier | Jackson |
| Board of Water and Sewer Commissioners of The City of Mobile | 1475 Hubert Pierce Rd | Mobile | Mobile |
| The Water Works and Sewer Board of The City of Prichard | 125 E Clark Ave | Prichard | Mobile |
| Total Environmental Solutions, Inc. | 8717 Edgewater Blvd | Ocean Springs | Jackson |

- Business information for the top water supplier (NAICS 221310 and 221320) employers in the impacted areas of Mississippi, Alabama, and Florida.



The site locations of each water supplier in the region.